

Creating a user-defined toolbar for macros in AutoCAD 2010

Introduction

Note: To install and run VBA macros in AutoCAD 2010, you must have downloaded and installed the VBA update which is not included in the default installation of AutoCAD 2010 due to Autodesk's policy of phasing out VBA.

This procedure covers the installation of the following macros:

Balloon	v1.1	18-01-2007
Dimension	v1.1	13-06-2008
Distance2	-	10-01-2007
ImportXYZ	v1.7	22-10-2008
PointID	v3.22	07-06-2007
Transformation	v3.1	04-03-2009
VectorDevs2007	v2007	21-12-2006

and how to create a toolbar containing shortcut buttons to run the macros.

1. Create Macro Folders

1.1 Copy the macros (.dwb) and bitmaps (.bmp) to a new sub-folder in the AutoCAD directory. eg: C:\Program Files\AutoCAD 2010\AutoCAD Macros

1.2 **Copy the file "VectorDevs2007.exe" (11-05-2009) to the C:\Windows directory.**
This is important as the VectorDevs2007.dwb macro is simply a shortcut to this file and it must know where to find it!

2. Change Workspace

1.1 Start "AutoCAD 2010"

1.2 Select "Workspace Switching" box at the bottom right of the screen.

1.3 Switch to "AutoCAD Classic"

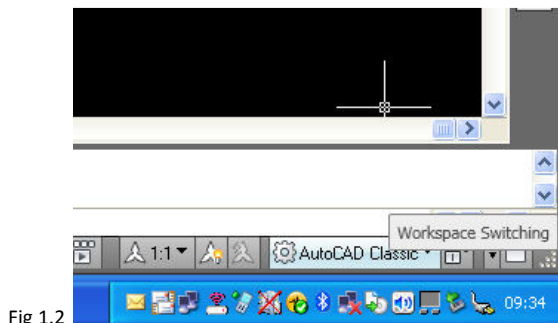


Fig 1.2

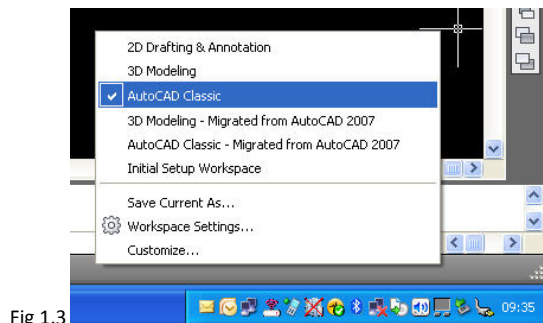


Fig 1.3

3. Pre-load Macros

This procedure pre-loads the macros each time AutoCAD is started and defines the location of the macros.

- 3.1 Select “Tools”, then “Load Application”.
- 3.2 Select “Contents” in the Start-up Suite.
- 3.3 Select “Add” and browse to each of the macros stored in the macro directory.
- 3.4 “Add” each macro required. Close all dialog boxes when finished.

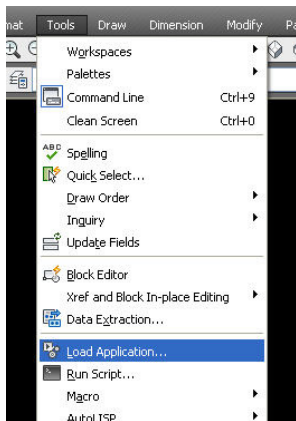


Fig 3.1

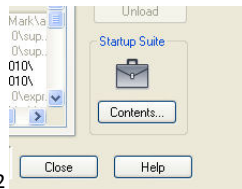


Fig 3.2

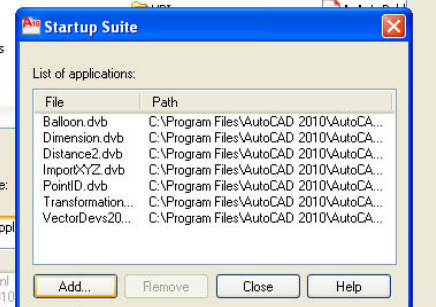


Fig 3.3

Displays the Add File to Startup Suite dialog box. You can use this dialog box to select files to add to the startup suite.

4. Create Macro Commands

- 4.1 Right-click on empty space on top toolbar frame and select “Customize...”
- 4.2 Click on the arrow at the bottom right of the Customization Interface to enlarge the dialog box.

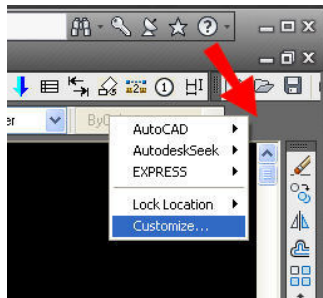


Fig 4.1

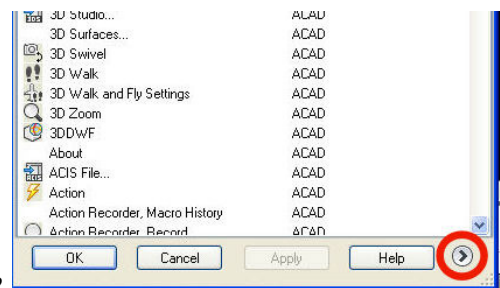


Fig 4.2

- 4.3 Click on the “Create a new command” button as shown.
- 4.4 Create a macro command similar to the figure below...

Enter the required macro name in the “Name” and “Description” command boxes.

In the Macro command box enter: -vbarun (followed by the name of the macro)

Note the hyphen in front of vbarun!

Do not change the Element ID setting.

Click inside the Small and Large Image command boxes and browse to the bitmap image stored in the macro folder.

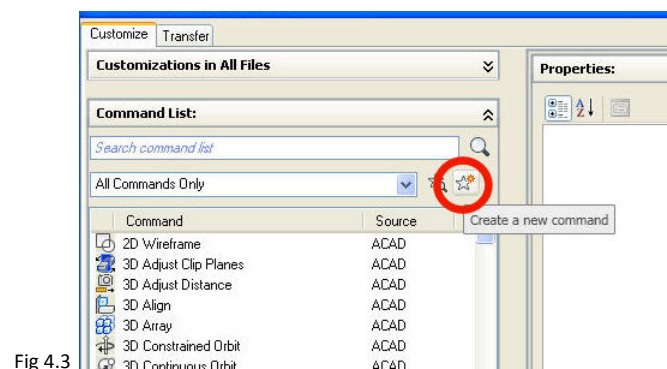


Fig 4.3

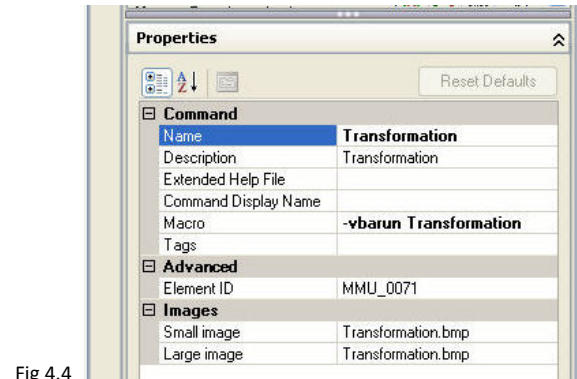


Fig 4.4

5. Create Toolbar (Optional)

- 5.1 Select "Transfer" from the top tab of the Customization dialog box.
- 5.2 Right-click "Toolbars" and select "New Toolbar" from the menu.
- 5.3 Enter a name for the new toolbar. eg. Macros.
- 5.4 Select "Apply" to apply all changes so far.

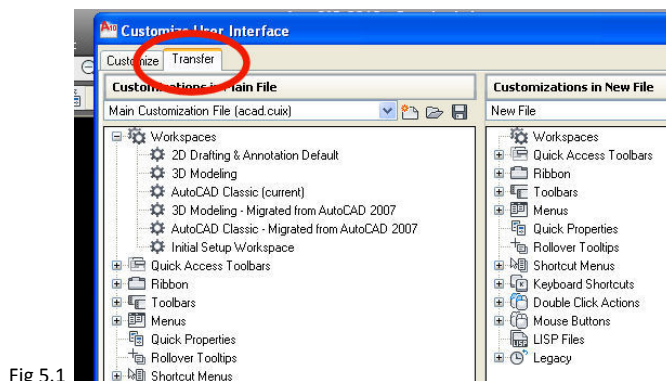


Fig 5.1

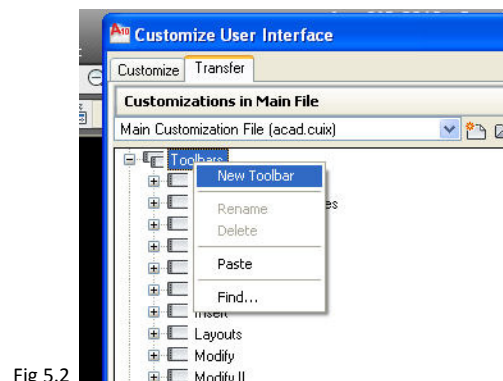


Fig 5.2

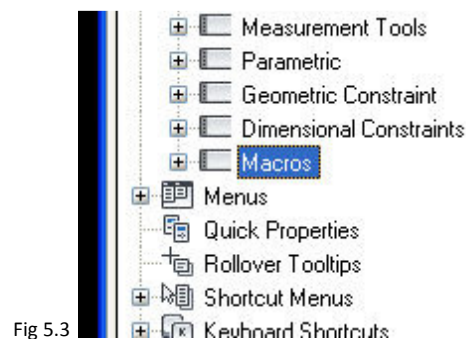


Fig 5.3

6. Modify Toolbar

6.1 Whilst in “Customization” mode, click on the command that you wish to be added to a toolbar, and drag it into the new empty toolbar or an existing toolbar.

6.2 Apply changes and close all open dialogs.

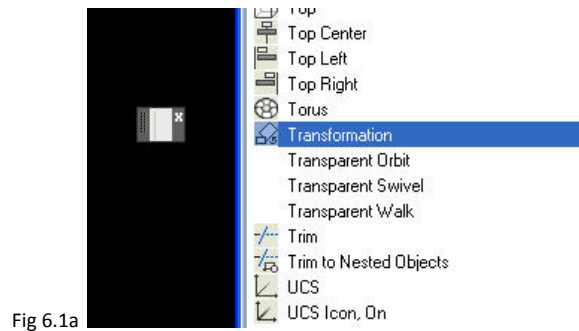


Fig 6.1a

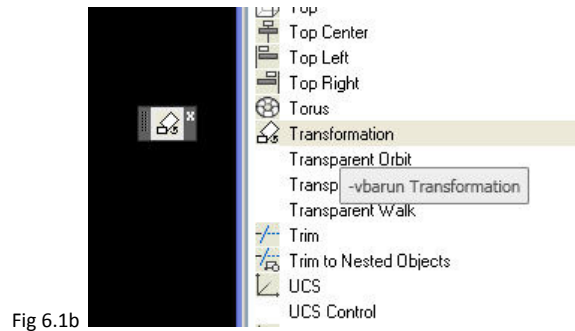


Fig 6.1b

© Mark Adams

14th May 2009